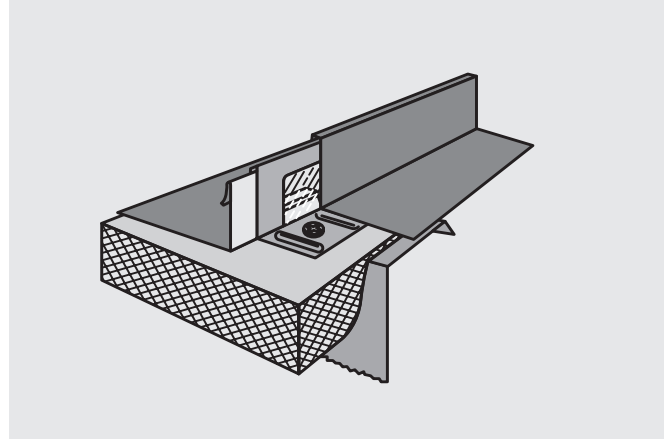
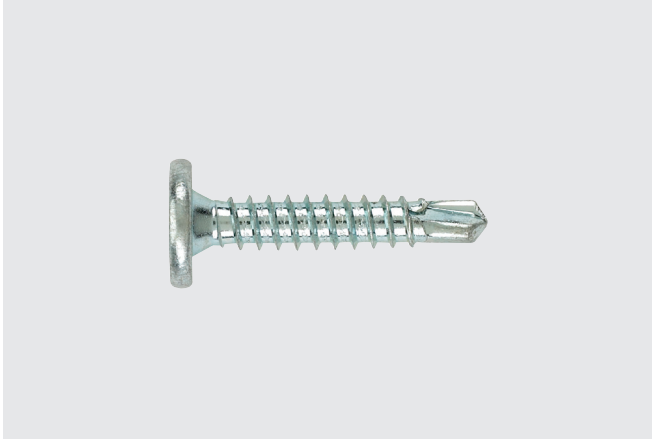


# #10 Self-Drill Pancake SSR Panel Clip to Metal Fastener



## Features and Benefits

- Pancake head low profile fits under most panel profiles
- Self-drill #2 point for fast installation
- #2 square drive provides driving stability
- Zinc plated

## Application

Standing seam panel clip attachment to metal substrate

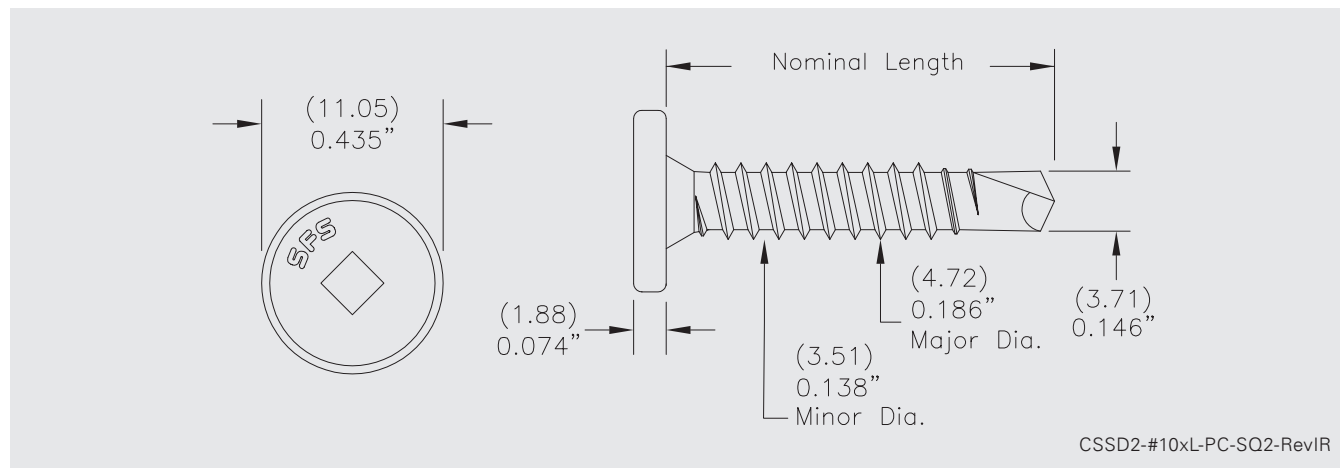
## Product Selection

| Material No. | Fastener Length |      | Thread Length* | Load Bearing Length |      | Description            | Carton Wt. (lbs.) | Carton Qty. |
|--------------|-----------------|------|----------------|---------------------|------|------------------------|-------------------|-------------|
|              | (in)            | (mm) |                | (in)                | (mm) |                        |                   |             |
| 1545832      | 1"              | 25   | Full           | 0.61"               | 16   | CSSD2-#10x1-PC-SQ2     | 40                | 5,000       |
| 1545823      | 1-1/2"          | 38   | Full           | 1.11"               | 28   | CSSD2-#10x1-1/2-PC-SQ2 | 25                | 2,500       |
| 1545841      | 2"              | 51   | Full           | 1.61"               | 41   | CSSD2-#10x2-PC-SQ2     | 30                | 2,000       |

Plain product bagged 250 pieces, unless otherwise noted.

\*Note – Thread length measured from tip of the drill to end of the threads.

# #10 Self-Drill Pancake SSR Panel Clip to Metal Fastener



## Product Specifications

Diameter: #10 (4.72 mm)  
Threads Per Inch: 16  
Head Style: Pancake  
Drive: #2 square

Drill Point: SD2  
Drill Capacity: 0.035"–0.150"  
Thread Major Dia: 0.186" (4.72 mm)  
Thread Minor Dia: 0.138" (3.51mm)

## Performance Data<sup>1,2</sup>

### Material Strength

|           |                     |
|-----------|---------------------|
| Tensile   | 1825 lbf / 8118 N   |
| Shear     | 1535 lbf / 6828 N   |
| Torsional | 61 lbf·in / 6.9 N·m |

### Pull Out Strength Steel

|                       | ICC protocol 45 ksi | SFS testing 56 ksi |
|-----------------------|---------------------|--------------------|
| <b>16 Ga (1.5 mm)</b> | 538 lbf / 2393 N    | 782 lbf / 3479 N   |
| <b>14 Ga (1.9 mm)</b> | 849 lbf / 3777 N    | 1072 lbf / 4768 N  |
| <b>12 Ga (2.7 mm)</b> | 1400 lbf / 6228 N   | 1782 lbf / 7927 N  |

<sup>1</sup> PLK 12503

<sup>2</sup> STQA50573

## Installation and Application Considerations

Tools: 0–2000 rpm screw gun equipped with depth sensing nose piece.

Fastener length should provide for a minimum of 3/16" penetration of fully developed threads into metal substrate.

**Use of impact guns or hammer drills is not recommended.**