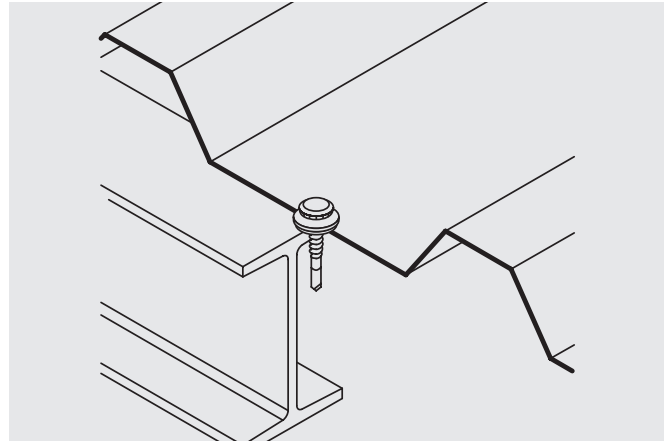


irius® SX14 Bi-Met 300™

Metal to Metal / Facade Attachment



Features and Benefits

- Corrosion resistant 304 series stainless
- irius® low profile head for aesthetic installed appearance
- Precision cold forged carbon steel point assures point strength and fast drilling performance through high strength steel and nested purlins
- Available with no sealing washer or stainless bond seal washer
- Color matched Vista spray available

Application

- Medium and heavy gauge metal connections
- Dissimilar metal connections
- Facade panel to metal

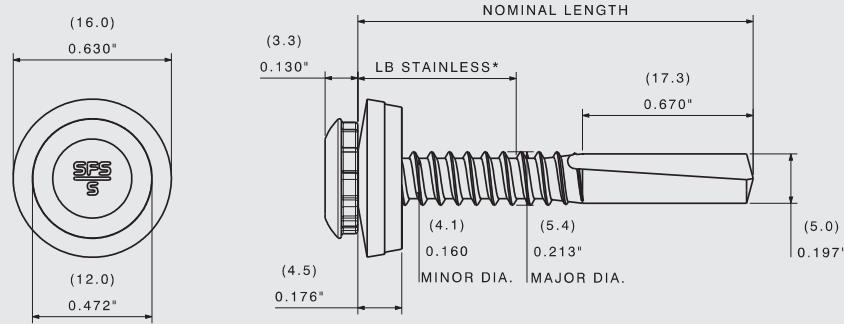
Product Selection

Material No.	Fastener Length		Load Bearing Length		Description	Carton Wt. (lbs.)	Carton Qty.
	(in)	(mm)	(in)	(mm)			
1012969	1-9/16"	40	0.47"	12	SX14/12-L12-S16-5,5x40	9	500

Dimensions in inches are approximate conversions.

irus® SX14 Bi-Met 300™

Metal to Metal / Facade Attachment



* - LB Stainless refers to the load-bearing stainless steel portion of the fastener
The application thickness, including the substrate, should never exceed the length to ensure structural integrity of the fastener.

SX14/L-L12-S16-5,5xL-RevE

Product Specifications

Diameter: Nominal #12 (5.4 mm)
Threads Per Inch: 14
Head Style: 0.472" irius® head (12.0 mm)
Washer: 5/8" stainless and EPDM bond seal (16 mm)

Material: 304SS
Drive: E420 irius®
Drill Point: SD5
Drill Capacity: 0.157"–0.550" (4.0 mm–14.0 mm)
Thread Major Dia: 0.213" (5.4 mm)
Thread Minor Dia: 0.160" (4.1 mm)

Performance Data^{1,2}

Material Strength

Tensile	2784 lbf / 12384 N
Shear	2110 lbf / 9386 N
Torsional	70 lbf-in / 7.9 N-m

Pull Out Strength Steel

3/16" (4.7 mm)	1596 lbf / 7100 N
1/4" (6.4 mm)	Exceeds tensile
3/8" (9.5 mm)	Exceeds tensile

Pull Over Strength Steel

26 Ga (0.5 mm)	1141 lbf / 5075 N
24 Ga (0.6 mm)	1420 lbf / 6316 N

¹ ETA-10/0198

² SFS 5625.19

Installation and Application Considerations

Fasteners should provide for a minimum of 3 fully developed threads through the metal substrates.

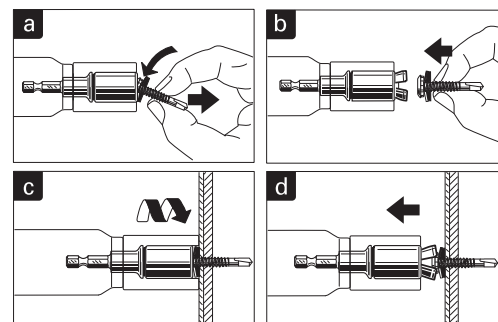
Tools: 0–2000 rpm screw gun equipped with depth sensing nose piece

The E420 irius® drive socket (part # 973316) is required.

Use of impact guns or hammer drills is not recommended.



How to use the E420 socket for irius® fasteners



- Pull out the jaws of the socket
- Insert the irius® (L12) head style fastener
- Setting process
- Pull back tool to open socket chaws