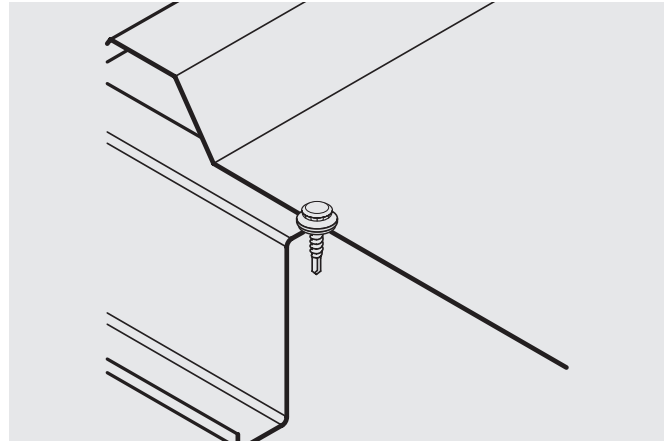


irius® SX5 Bi-Met 300®

Metal to Metal / Facade Attachment



Features and Benefits

- Corrosion resistant 304 series stainless
- irius® low profile head for aesthetic installed appearance
- Precision cold forged carbon steel point assures point strength and fast drilling performance through high strength steel and nested purlins
- Available with no sealing washer or stainless bond seal washer
- Color matched Vista spray available

Application

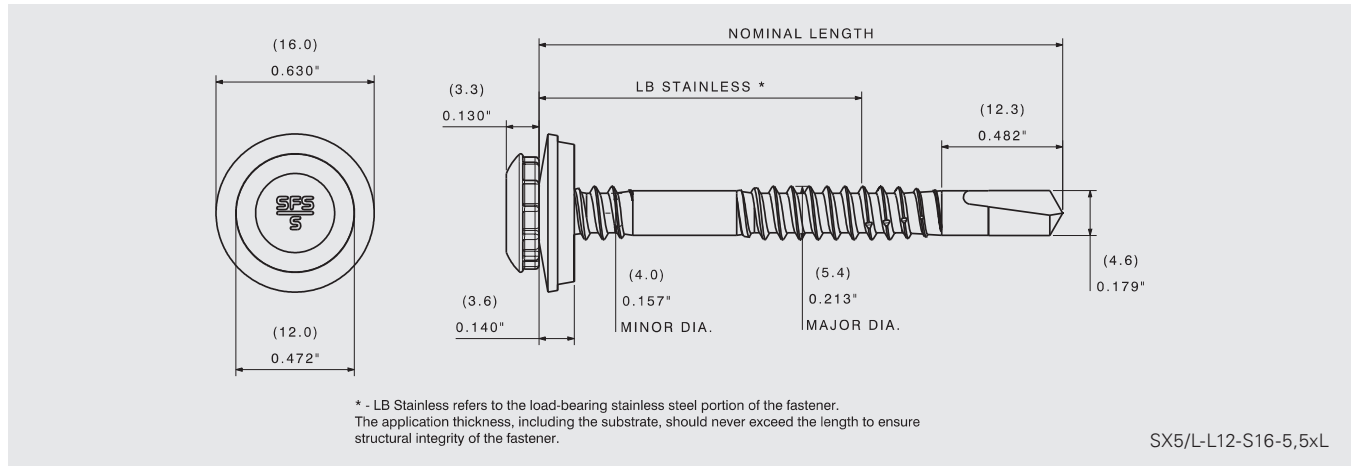
- Light and medium gauge metal connections
- Dissimilar metal connections
- Facade panel to metal

Product Selection

Material No.	Fastener Length		Load Bearing Length		Description	Carton Wt. (lbs.)	Carton Qty.
	(in)	(mm)	(in)	(mm)			
1134340	1-1/4"	31	0.31"	8	SX5/8-L12-S16-5,5x31	8	500
1134352	1-1/2"	35	0.50"	12	SX5/12-L12-S16-5,5x35	9	500
1135439	1-5/8"	41	0.69"	18	SX5/18-L12-S16-5,5x41	10	500
1306143	2-1/8"	53	0.75"	20	SX5/20-L12-S16-5,5x53	6	250

irus® SX5 Bi-Met 300®

Metal to Metal / Facade Attachment



Product Specifications

Diameter: Nominal #12 (5.4 mm)
 Threads Per Inch: 14
 Head Style: 0.472" irius® head (12.0 mm)
 Washer: 5/8" stainless and EPDM bond seal (16 mm)

Material: 304SS
 Drive: E420 irius®
 Drill Point: SD3
 Drill Capacity: 0.060"–0.157" (1.5 mm–4.0 mm)
 Thread Major Dia: 0.213" (5.4 mm)
 Thread Minor Dia: 0.157" (4.0 mm)

Performance Data^{1,2}

Material Strength		Pull Out Strength Steel		Pull Over Strength Steel	
Tensile	2743 lbf / 12201 N	16 Ga (1.5 mm)	470 lbf / 2090 N	26 Ga (0.5 mm)	1141 lbf / 5075 N
Shear	2149 lbf / 9559 N	14 Ga (1.9 mm)	656 lbf / 2920 N	24 Ga (0.6 mm)	1420 lbf / 6316 N
Torsional	70 lbf-in / 7.9 N-m	12 Ga (2.7 mm)	1250 lbf / 5560 N		

¹ ETA-10/0198

² SFS 5625.19

Installation and Application Considerations

Fasteners should provide for a minimum of 3 fully developed threads through the metal substrates.

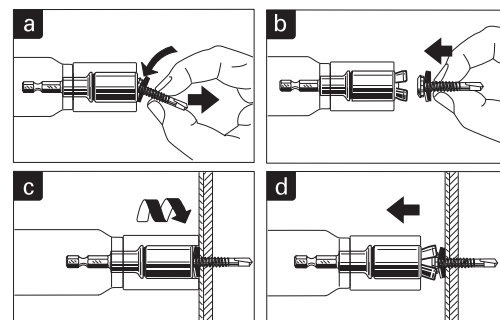
Tools: 0–2000 rpm screw gun equipped with depth sensing nose piece

The E420 irius® drive socket (part # 973316) is required.

Use of impact guns or hammer drills is not recommended.



How to use the E420 socket for irius® fasteners



- Pull out the jaws of the socket
- Insert the irius® (L12) head style fastener
- Setting process
- Pull back tool to open socket chaws