

SFS

Approved
for soffit
application

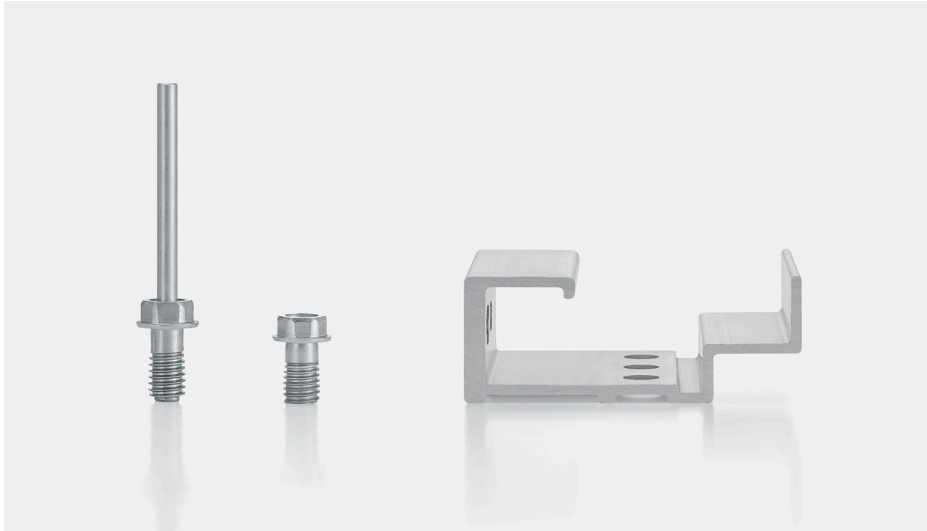
Concealed attachment solution

TUF-S

Secure and easy attachment
of HPL or fiber cement panels



Concealed solution and quick to install **TUF-S**



Easy

- No complex undercut hole required – simple standard hole sufficient
- No special tools to install required
- Holes can even be drilled on site
- Quick and easy installation with the battery riveting tool from GESIPA® PowerBird® Pro

Secure

- No overtorquing of the TUF-S
- High pullout values with the installed thread
- No unwinding
- Removable possible via hex head
- Can be used in soffit application (Trespa and Fundermax panels)
- Approved for fastening system with the existing ETA assessment ETA-15/0476

50% less installation time

The TUF-S blind fastener from SFS is superior to previous approaches to the attachment of HPL or fiber cement cladding panels with regards to installation and long-term security.

Installation is performed quickly and securely by one person, without the use of special tools. Installation time is also reduced by up to 50% when compared to conventional blind attachments. The TUF-S blind fastener can be removed once if required.

Optimum security

In addition to an easy and timesaving installation, the TUF-S is a secure solution. The fastener cannot be overdriven during installation. Due to its radial expansion when the mandrel is removed, the partially cut thread becomes wedged in the panel material, generating very high pullout values.

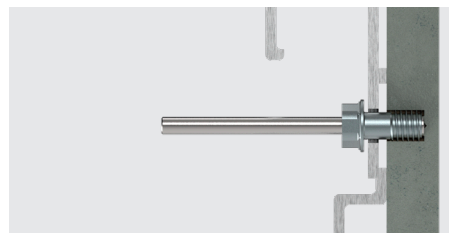
Spontaneous slackening due to expansion or vibration is not possible. The sleeve is made of austenitic stainless steel (material DIN 1.4401, grade A4-316SS).

1.



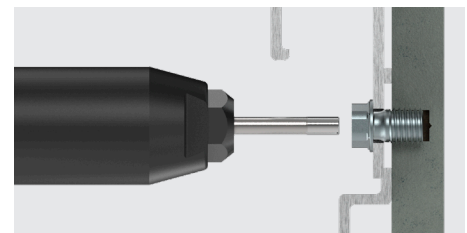
Pre-drill using a Ø 6 mm blind-hole drill with depth-stop – in HPL and fiber cement panel with VHM

2.



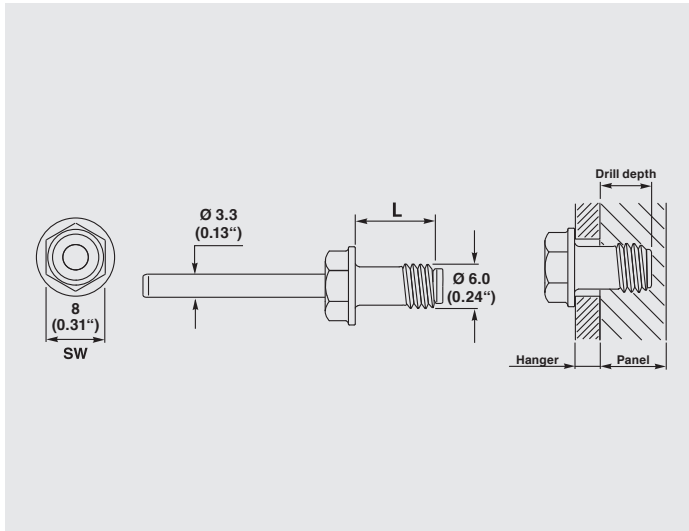
Position the pre-drilled hanger over the hole in the panel and push through the TUF-S blind fastener

3.



Remove the mandrel using a GESIPA® PowerBird® Pro battery riveting tool combined with nose piece 17/36 or 17/40

Designed for use with HPL or fiber cement panels



Panel thickness	Hanger	Drill depth	TUF-S	Drill bit
8.0 mm	2.0 mm	5.0 mm	TUF-S-6x7-A4	VHM-6.0x40
		5.5 mm	TUF-S-6x7.5-A4	VHM-6.0x40.5
		6.0 mm	TUF-S-6x8-A4	VHM-6.0x41
	2.5 mm	5.0 mm	TUF-S-6x7.5-A4	VHM-6.0x40
		5.5 mm	TUF-S-6x8-A4	VHM-6.0x40.5
		6.0 mm	TUF-S-6x8.5-A4	VHM-6.0x41
	3.0 mm	5.0 mm	TUF-S-6x8-A4	VHM-6.0x40
		5.5 mm	TUF-S-6x8.5-A4	VHM-6.0x40.5
	3.5 mm	5.0 mm	TUF-S-6x8.5-A4	VHM-6.0x40
		5.5 mm	TUF-S-6x9-A4	VHM-6.0x40.5
	5.0 mm	5.0 mm	TUF-S-6x10-A4	VHM-6.0x40
		6.0 mm	TUF-S-6x11-A4	VHM-6.0x41
10.0 mm	3.0 mm	6.0 mm	TUF-S-6x9-A4	VHM-6.0x41
		7.0 mm	TUF-S-6x10-A4	VHM-6.0x42
		8.0 mm	TUF-S-6x11-A4	VHM-6.0x43
	3.5 mm	6.5 mm	TUF-S-6x10-A4	VHM-6.0x41.5
		7.5 mm	TUF-S-6x11-A4	VHM-6.0x42.5
	5.0 mm	7.0 mm	TUF-S-6x12-A4	VHM-6.0x42
		8.0 mm	TUF-S-6x13-A4	VHM-6.0x43
	5.0 mm	8.5 mm	TUF-S-6x12-A4	VHM-6.0x43.5
12.0 mm	3.5 mm	8.5 mm	TUF-S-6x12-A4	VHM-6.0x43.5

Use the drill bits with the SFS depth locator universal



Depth locator universal with Ø 6mm VHM drill bit



GESIPA® PowerBird® Pro battery riveting tool



Screw gun

Calculation: TUF-S Drill depth + Hanger = TUF-S Length

Example:

5.5 Drill depth + 3.5 Hanger = **9.0 mm** = TUF-S-6x**9**-A4

6.0 Drill depth + 2.2 Hanger = **8.2 mm*** = TUF-S-6x**8**-A4

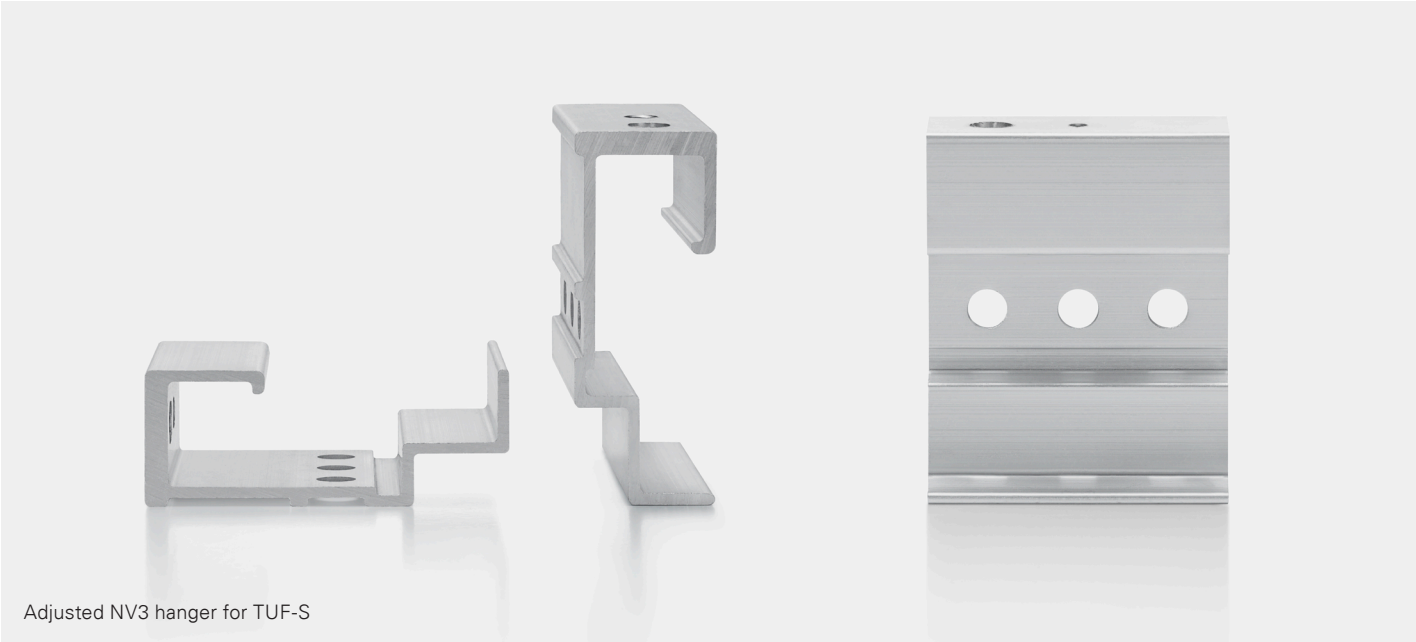
6.0 Drill depth + 2.4 Hanger = **8.4 mm*** = TUF-S-6x**8**-A4

6.0 Drill depth + 2.5 Hanger = **8.5 mm** = TUF-S-6x**8.5**-A4

* round down the TUF-S length to the nearest length available



Complementary concealed attachment solutions for rainscreen panels



US
T 800 234 4533
us.sfs.com

Canada
T 866 847 5400
ca.sfs.com

Metric values are approximate conversions.
All information is non-binding and without guarantee. Before using the products, all specifications and calculations must be checked by a suitably qualified person and local regulations must be observed. This document is subject to revision. We reserve the right to make technical changes. (10/2022, V1.01, CC4012)