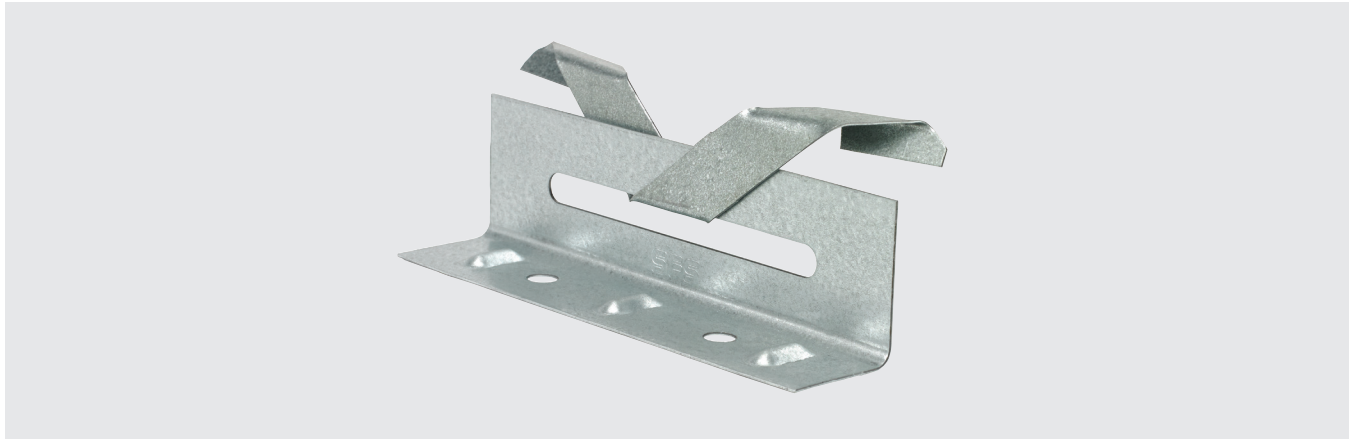


1-1/2" Butterfly Base & Tab Engineered Panel Clip



Features and Benefits

- Manufactured from high quality, corrosion resistant steel meeting strict mechanical property requirements
- Tightly controlled manufacturing tolerances for a secure and functional fit every time
- Allows limited thermal movement (determined by length of slide between the clip's top and base). Always follow the standing seam panel manufacturer's details and instructions on proper use, location and performance values of float clips as well as properly fixing of roof panels to the structure to prevent uncontrolled sliding

Application

Standing seam panel clips used for attachment of mechanically seamed panel types wherein movement of the roof panel system is required to allow for thermal expansion and contraction

Product Selection

Base

Material No.	Item	Description	Carton Wt. (lbs.)	Carton Qty.
1126602	1-1/2" Butterfly base	22 ga. (0.8 mm) G-90 Galvanized	28	200
1270019	1-1/2" Butterfly base	22 ga. (0.8 mm) 304SS	20	200
1291593	1-1/2" Butterfly base	26 ga. (0.5 mm) 304SS	11	200

Tab

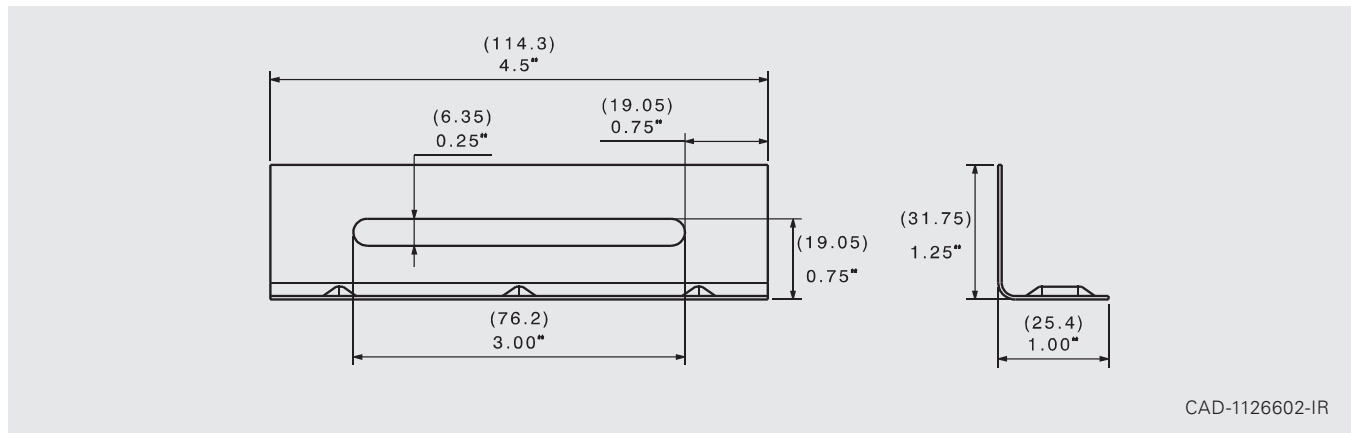
Material No.	Item	Description	Carton Wt. (lbs.)	Carton Qty.
1238708	1-1/2" Butterfly tab	24 ga. (0.6 mm) G-90 Galvanized	13	200
1238709	1-1/2" Butterfly tab	24 ga. (0.6 mm) 304SS	11	200
1236937	1-1/2" Butterfly tab	26 ga. (0.5 mm) 304SS	9	200

1-1/2" Butterfly Base & Tab Engineered Panel Clip

Specifications Base

Height: 1.25" (31.75 mm)

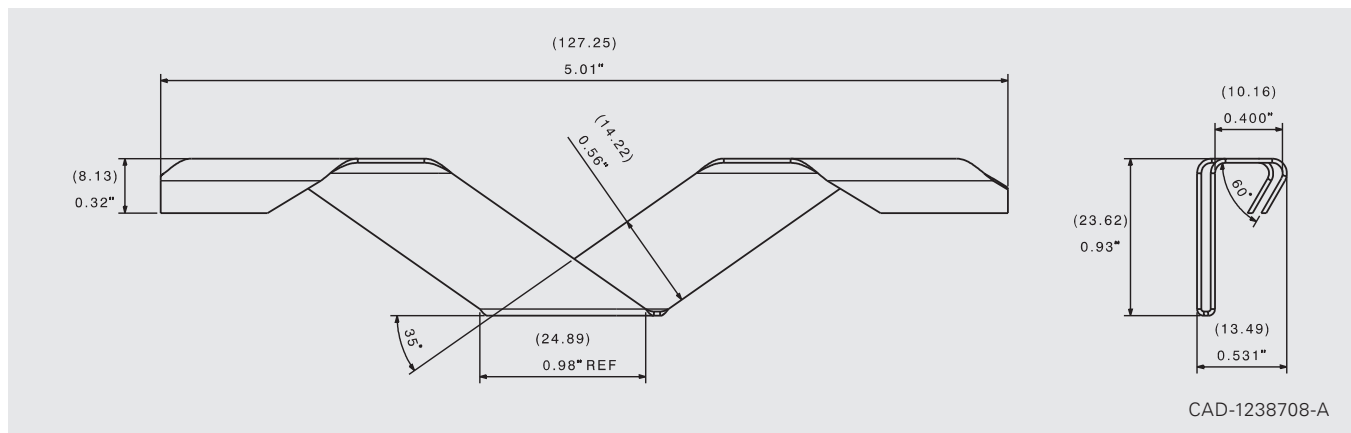
Width: 4.5" (114.3 mm)



Specifications Tab

Height: 0.93" (23.62 mm)

Horizontal Leg: 0.40" (10.16 mm)



Installation and Application Considerations

- Quadro 1-1/2" mechanical
- New Tech SS150
- Roll Former Corp. VS150
- Refer to SFS standing seam fastener offering for panel clip attachment options
- Always consult with panel manufacturer or design engineer to ensure proper clip recommendations