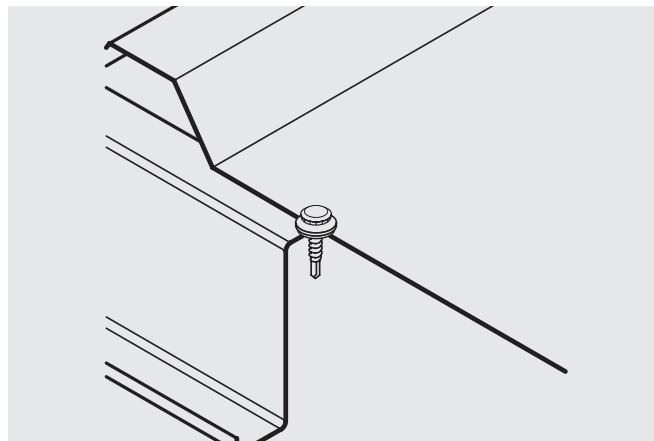


#14 irius® SX3 Bi-Met 300®

Metal to Metal / Facade Attachment



Features and Benefits

- Corrosion resistant 304 series stainless
- irius® low profile head for aesthetic installed appearance
- Precision cold forged carbon steel point assures point strength and fast drilling performance through high strength steel and nested purlins
- Available with no sealing washer or stainless bond seal washer
- Color matched Vista spray available

Application

- Light and medium gauge metal connections
- Dissimilar metal connections
- Facade panel to metal

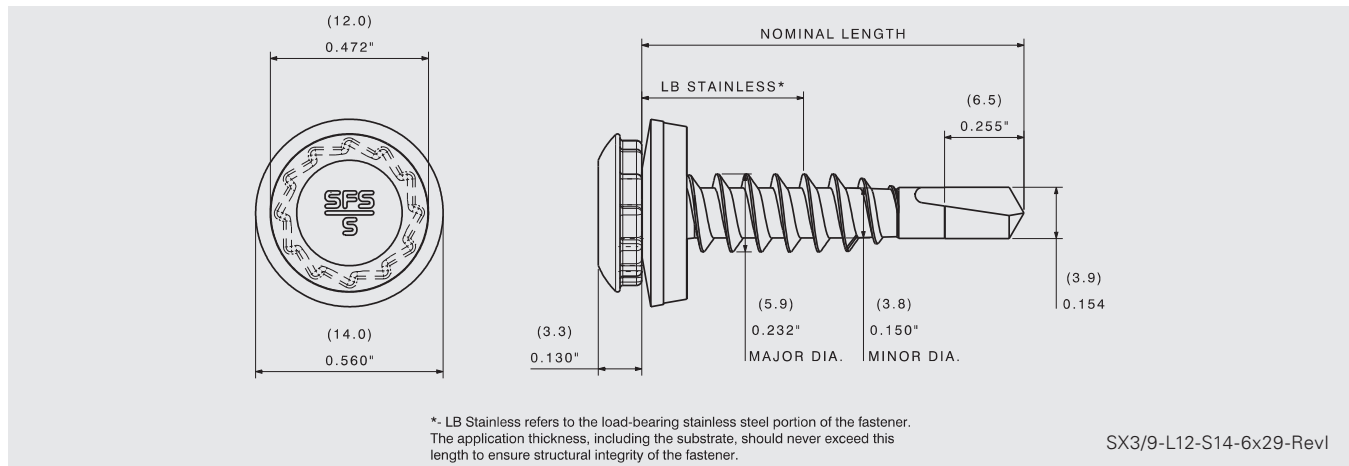
Product Selection

Material No.	Fastener Length		Load Bearing Length		Description	Carton Wt. (lbs.)	Carton Qty.
	(in)	(mm)	(in)	(mm)			
1386072	1-1/8"	29	0.38"	9	SX3/9-L12-S14-6x29	6	500

Dimensions in inches are approximate conversions.

#14 irius® SX3 Bi-Met 300®

Metal to Metal / Facade Attachment



Product Specifications

Diameter: Nominal #14 (5.9 mm)
 Threads Per Inch: 11
 Head Style: 0.472" irius® head (12.0 mm)
 Washer: 19/32" stainless and EPDM bond seal (14 mm)

Material: 304SS
 Drive: E420 irius®
 Drill Point: SD2
 Drill Capacity: 0.035"–0.098" (0.9 mm–2.5 mm)
 Thread Major Dia: 0.232" (5.9 mm)
 Thread Minor Dia: 0.146" (3.7 mm)

Performance Data^{1,2}

Material Strength

Tensile	2535 lbf / 11276 N
Shear	1864 lbf / 8291 N
Torsional	70 lbf-in / 7.9 N-m

Pull Out Strength Steel

16 Ga (1.5 mm)	7051 lbf / 3140 N
14 Ga (1.9 mm)	954 lbf / 4245 N
12 Ga (2.7 mm)	1120 lbf / 4980 N

Pull Over Strength Steel

26 Ga (0.5 mm)	936 lbf / 4164 N
24 Ga (0.6 mm)	1235 lbf / 5494 N

¹ ETA 10/0198

² SFS 5625.19

Installation and Application Considerations

Fasteners should provide for a minimum of 3 fully developed threads through the metal substrates.

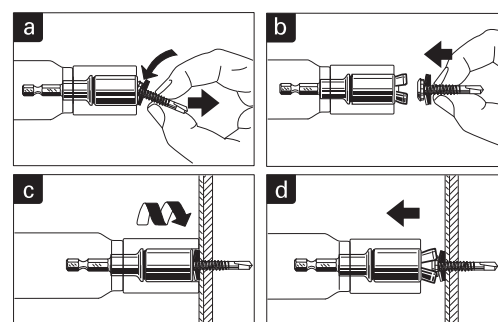
Tools: 0–2000 rpm screw gun equipped with depth sensing nose piece

The E420 irius® drive socket (part # 973316) is required.

Use of impact guns or hammer drills is not recommended.



How to use the E420 socket for irius® fasteners



- Pull out the jaws of the socket
- Insert the irius® (L12) head style fastener
- Setting process
- Pull back tool to open socket chaws