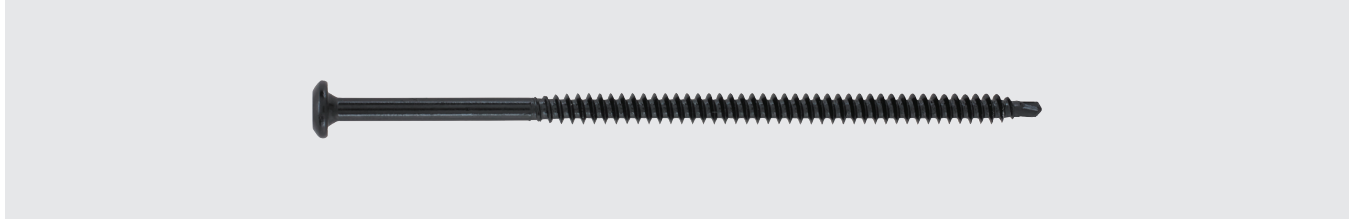


#14-13 Phillips Head

DEKFAST™ DF-#14-13-PH3



Features and Benefits

- Extra stable #3 Phillips drive, recessed in truss head
- Low profile truss head can be used for clip attachment in applications where head height is important
- 13 threads per inch for ease of installation in concrete roof decks
- Cathodic epoxy e-coat

Application

Insulation and membrane attachment to steel and wood

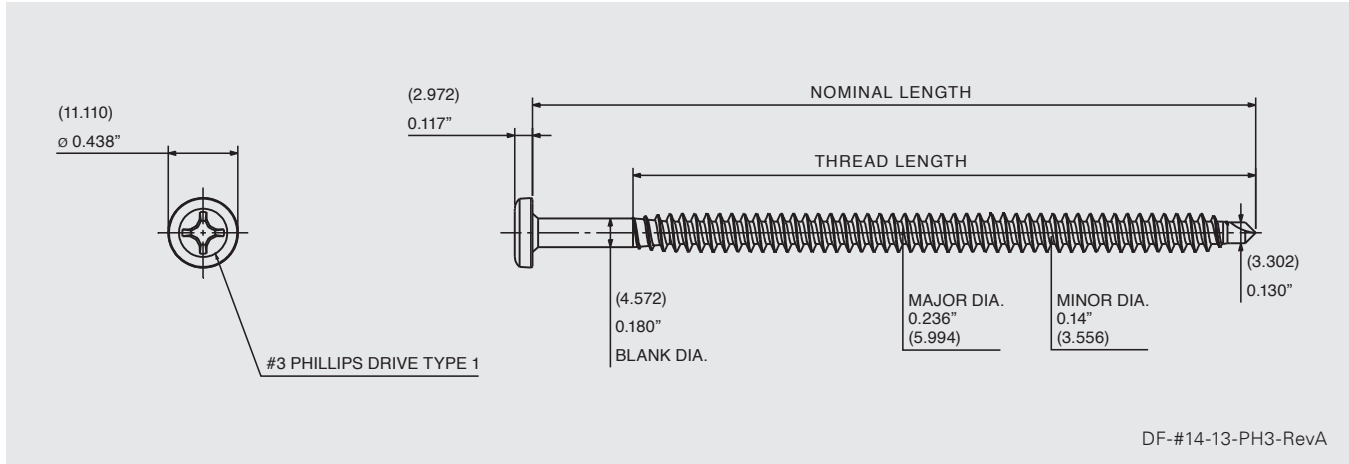
Product Selection

Material No.	Fastener Length	Thread Length*	Description	Carton Wt. (lbs.)	Carton Qty.
1202602	1-1/4"	Full	DF-#14-13x1-1/4-PH3-E0999-B	11	1,000
1203249	2"	Full	DF-#14-13x2-PH3-E0999-B	17	1,000
1203528	3"	Full	DF-#14-13x3-PH3-E0999-B	25	1,000
1203578	4"	Full	DF-#14-13x4-PH3-E0999-B	31	1,000
1203605	5"	4"	DF-#14-13x5-PH3-E0999-B	33	1,000
1203632	6"	4"	DF-#14-13x6-PH3-E0999-B	46	1,000
1203659	7"	4"	DF-#14-13x7-PH3-E0999-B	27	500
1203810	8"	4"	DF-#14-13x8-PH3-E0999-B	30	500
1204081	9"	4"	DF-#14-13x9-PH3-E0999-B	34	500
1202260	10"	4"	DF-#14-13x10-PH3-E0999-B	38	500
1202597	11"	4"	DF-#14-13x11-PH3-E0999-B	41	500
1202600	12"	4"	DF-#14-13x12-PH3-E0999-B	45	500

*Note – Thread length measured from tip of the drill point to end of the threads.

#14-13 Phillips Head

DEKFAST™ DF-#14-13-PH3



Coating and Corrosion

15/15 Kesternich per FM 4470
800 hour salt spray per ASTM B117
Cathodic epoxy e-coat

Approvals



Performance Data^{1, 2, 3}

Material Strength

Tensile	3150 lbf / 14011 N
Shear	1600 lbs / 7117 N
Torsional	90 lbf·in / 10 N·m

Pull Out Strength Wood

2x dimensional lumber (1" penetration) (25.4 mm):	1422 lbf / 6325 N
3/4" (19.1 mm) FR Plywood (through penetration):	460 lbf / 2046 N
19/32" APA rated plywood	697 lbf / 3100 N

Pull Out Strength Steel

18 Ga (1.2 mm):	902 lbf / 4012 N
20 Ga (0.9 mm):	634 lbf / 2820 N
22 Ga (Grade 33):	444 lbf / 1975 N
22 Ga (Grade 40):	519 lbf / 2309 N
22 Ga (Grade 80):	676 lbf / 3007 N

Pull Out Strength Concrete

	Embedment	Pre-drill	
4000 psi	1"	3/16"	1150 lbf / 5115 N
4000 psi	1.5"	3/16"	1453 lbf / 6463 N

¹ SFS-6046.23

² 4u-SFS-23-SSMFP-01

³ 3062152

Installation and Application Considerations

Tools: 2000–2500 rpm screw guns with hardened #3 Phillips bit. For structural concrete, 3/16" carbide bit and 1500 rpm max screw guns, or hammer drills in the hammer mode. Structural concrete to be predrilled with standard 3/16" carbide bit to minimum 1/2" deeper than fastener penetration. The standard carton package includes one #3 Phillips bit.

Material:

- Steel thickness from 22 ga (0.030 in.) through 18 ga (0.048 in.): Min penetration: 3/4"
- Wood 2x (1-1/2" thick): Min penetration: 1"
- Plywood and OSB: Min through penetration: 3/4"
- Structural concrete 1" embedment: min penetration 1"
- Structural concrete 1-1/2" embedment: min penetration 1-1/2"